

The clinical importance of quantifying body fat distribution during androgen deprivation therapy for prostate cancer

Stephen J Foulkes, Robin M Daly and Steve F Fraser

Institute for Physical Activity and Nutrition, School of Exercise and Nutrition Sciences, Deakin University, Geelong, Australia

Correspondence should be addressed to S J Foulkes

Email
steve.foulkes@deakin.edu.au

Abstract

Androgen deprivation therapy (ADT) is now considered a mainstay in the treatment of metastatic and locally advanced prostate cancer (PCa). Despite well-established benefits of ADT in relation to overall survival, this treatment has been associated with a number of adverse effects, particularly with regard to key cardiometabolic risk factors including the development of insulin resistance, dyslipidemia and increases in total and regional fat mass. In non-ADT populations, increased levels of visceral adipose tissue (VAT) are thought to be a key mediator of the increased cardiometabolic risk associated with weight gain, but this has received limited attention in men treated with ADT. VAT is best assessed using tools such as computed tomography or magnetic resonance imaging; however, these tools are not readily accessible for the majority of researchers or clinicians. Recent advances allow for a method of estimating VAT using a whole-body dual-energy X-ray absorptiometry (DXA) scan that shows promise as a practical tool for researchers to evaluate changes in body fat distribution during ADT. The aim of this narrative review is to (1) review the available evidence with regard to the relationship between ADT and cardiometabolic risk; (2) discuss the role of body fat distribution on cardiometabolic risk in non-ADT populations, with a particular emphasis on the importance of visceral adiposity; (3) examine the potential influence of ADT on body fat distribution and visceral adiposity and (4) provide an overview of current tools used to measure changes in body fat distribution in men treated with ADT, highlighting the potential utility of a recently developed DXA-derived measure of VAT.

Key Words

- ▶ prostate cancer
- ▶ androgen deprivation therapy
- ▶ fat distribution
- ▶ visceral adipose tissue
- ▶ dual-energy X-ray absorptiometry
- ▶ cardiometabolic risk

Endocrine-Related Cancer (2017) **24**, R35–R48

Introduction

Prostate cancer (PCa) is the primary cause of male cancer within developed nations (Torre *et al.* 2015). The five-year relative survival for PCa is now approaching 100% (DeSantis *et al.* 2014, Siegel *et al.* 2015), which can be attributed to improvements in detection and treatment of PCa. With more men surviving longer after their cancer diagnosis, there is greater emphasis for

health professionals to address non-cancer sources of morbidity and mortality, particularly those that could be related to the adverse effects of cancer treatment (Gomella *et al.* 2009). Androgen deprivation therapy (ADT) is a commonly prescribed treatment for slowing progression of metastatic PCa and has proven survival benefits when combined with radiation therapy in

men with locally advanced PCa (Heidenreich *et al.* 2014, Mohler *et al.* 2014). Over the past two decades, there has been progressive increase in the number of men receiving ADT treatment (Gilbert *et al.* 2011, Grossmann *et al.* 2011, Connolly *et al.* 2012); however, with the development of alternate regimes such as intermittent ADT and modifications to medical reimbursement schemes, use of continuous ADT may now be plateauing or possibly even declining (Tsai *et al.* 2015b, Liede *et al.* 2016). Regardless, the severe hypogonadism that occurs as a result of treatment has been associated with multiple adverse effects on musculoskeletal and cardiometabolic health, cognition, sexual health and function (Grossmann *et al.* 2011, Shastri & Yaturu 2011, Ahmadi & Daneshmand 2013, Nguyen *et al.* 2015). Evidence from observational cohort studies indicate that men undergoing ADT are at 11–31% increased risk of developing cardiovascular disease (CVD) (Keating *et al.* 2006, 2010, Saigal *et al.* 2007, Jespersen *et al.* 2014) and 16–61% increased risk of developing type 2 diabetes (Keating *et al.* 2006, 2010, Alibhai *et al.* 2009, Tsai *et al.* 2015a). In addition, evidence from prospective studies has shown that ADT is associated with increases in insulin resistance, dyslipidemia and total adiposity (Galvão *et al.* 2008, Hamilton *et al.* 2011, Morote *et al.* 2015). This is particularly concerning given that CVD is the primary cause of non-cancer mortality for men diagnosed with PCa (Lu-Yao *et al.* 2004, Ketchandji *et al.* 2009, Riihimäki *et al.* 2011). Identifying and addressing the adverse cardiometabolic effects associated with ADT is therefore an important consideration for the treating physician. Understanding the factors responsible for the increased cardiometabolic risk occurring as a result of ADT will allow physicians and health care professionals to identify those at greater risk of cardiometabolic disorders, which should prompt an early intervention in the treatment process.

Evidence from non-ADT populations has consistently shown that obesity and fat mass are important mediators of cardiometabolic risk; however, this relationship is influenced by the distribution within distinct depots of adipose tissue (Cornier *et al.* 2011). The accumulation of fat mass within the abdominal region (Snijder *et al.* 2004b, Ghandehari *et al.* 2008), specifically within visceral adipose tissue (VAT) (Liu *et al.* 2010, Kaess *et al.* 2012, Nazare *et al.* 2012, Smith *et al.* 2012) is thought to be particularly deleterious for cardiometabolic health. Computed tomography (CT) and magnetic resonance imaging (MRI) are considered gold standards for the

assessment of VAT (Cornier *et al.* 2011); however, these tools are expensive, require a specialized operator, and may not be easily accessible. Therefore, alternative tools that can accurately quantify VAT, whilst being accessible and economically viable for assessing a large number of patients are required.

Recent advances in DXA technology have led to the development of software that can predict abdominal subcutaneous adipose tissue (SAT) and VAT from a whole-body scan (Kaul *et al.* 2012), and this has recently been validated against CT in men undergoing ADT (Cheung *et al.* 2016a). Whilst ADT has been associated with gains in abdominal fat mass, there are conflicting reports as to whether this is due to changes in SAT and/or VAT (Smith *et al.* 2002, 2008b, Hamilton *et al.* 2011, Cheung *et al.* 2016b). Thus, further research is needed using direct measures of quantifying abdominal adipose tissue to provide evidence regarding the relationship between ADT and cardiometabolic risk and if changes in body fat distribution during treatment are contributing to this increased risk, thereby allowing for earlier and more-targeted intervention. Furthermore, given the greater practicality and feasibility of using a DXA-derived assessment of SAT and VAT, the accuracy and clinical utility of this measure requires further investigation.

The following narrative review aims to (1) explore the relationship between ADT and cardiometabolic risk; (2) discuss the role of body fat distribution on cardiometabolic risk in non-ADT populations, with a particular emphasis on the importance of visceral adiposity; (3) examine the potential influence of ADT on body fat distribution and visceral adiposity and (4) provide an overview of current tools used to quantify body fat distribution in men treated with ADT, highlighting the conceivable role of a DXA-derived measure of VAT in informing clinical decision making within this population.

Effect of androgen deprivation therapy on cardiometabolic risk

Evidence from both prospective and population-based studies has established a relationship between ADT and a number of adverse effects that increase the risk of CVD and type 2 diabetes (Grossmann *et al.* 2011, Nguyen *et al.* 2015). This led to the American Heart Association releasing a statement in 2010 highlighting the potential link between ADT and increased risk of CVD (Levine *et al.* 2010). This statement also emphasizes that clinicians periodically evaluate and monitor

key cardiometabolic risk factors in their patients (Levine et al. 2010). This requires that clinicians have a sound understanding of the influence of ADT on cardiometabolic functioning and factors that may be mediating this process.

Insulin resistance and glucose regulation

There is mounting evidence that ADT treatment may contribute to the development of type 2 diabetes, through an initial increase in insulin resistance, followed by a progressive worsening of glycemic control (summarized in Table 1). In a cross-sectional study comparing 18 men with PCa who had undergone at least 12 months of ADT compared to 17 men with PCa who were ADT naïve and 18 age-matched controls without PCa, those treated with ADT had significantly higher levels of fasting insulin, glucose and insulin resistance, as measured by the homeostatic model assessment of insulin resistance (HOMA-IR), even after adjustment for age and BMI (Basaria et al. 2006). Prospective studies have demonstrated increases in fasting insulin ranging from 26 to 63% (Smith et al. 2001, 2008a, Dockery et al. 2003), increases in HOMA-IR of up to 27% (Cheung et al. 2016b) and decrements in insulin sensitivity of 13% (measured by insulin sensitivity index) (Smith et al. 2006, 2008a) following at least 12 weeks of ADT. Observations from short-term administration of ADT (<12 weeks) have demonstrated variable effects on plasma glucose, with some studies showing significant increases (Smith et al. 2006) and others showing no change (Smith et al. 2001, Dockery et al. 2003). Longitudinal studies with follow-up periods beyond 12 months have shown 5–10% increases in fasting glucose (Ziaran et al. 2013, Morote et al. 2015). Although studies investigating

changes in HbA1c have shown little to no change in HbA1c during the first 6–12 months of ADT (Smith et al. 2006, Hamilton et al. 2011, Phillips et al. 2014, Morote et al. 2015), given that changes in plasma glucose do not tend to appear until at least 12 months of treatment, studies with longer follow-up periods may be required to adequately assess the effect of ADT on this measure. This discrepancy between short- and long-term studies may be explained by a relative compensatory hyperinsulinemia occurring after the onset of ADT, which is initially able to maintain euglycemia (Kahn et al. 2014). However, with continued insulin resistance, pancreatic insulin release is no longer sufficient to maintain euglycemia, with the end result being impaired fasting glucose (Kahn et al. 2014).

Changes in lipid profile

As summarized in Table 2, there is considerable evidence indicating that ADT adversely affects blood lipid profiles. Cross-sectional studies of men with PCa undergoing ADT reported significantly higher levels of triglycerides, total cholesterol, low-density lipoprotein (LDL) and high-density lipoprotein (HDL) cholesterol compared to ADT-naïve and age-matched controls (Basaria et al. 2002, Cleffi et al. 2011). Results from prospective studies assessing changes in lipids over the first 3–12 months of ADT have shown a greater level of variability, with some studies reporting increases in triglycerides (27–46%) (Smith et al. 2002, 2006, Hamilton et al. 2011, Morote et al. 2015), LDL cholesterol (3–10%) (Smith et al. 2002, Morote et al. 2015, Oka et al. 2015) and HDL cholesterol (8–20%) (Dockery et al. 2003, Smith et al. 2006, Morote et al. 2015), whereas others have reported no change (Smith et al. 2001, 2006, Dockery et al. 2003, Hamilton et al. 2011,

Table 1 Results from studies investigating the effect of ADT on insulin and glucose homeostasis.

Study	n	Comparison groups	Duration	Fasting glucose (%)	Fasting insulin (%)	Insulin resistance (%)
Cross-sectional studies						
Basaria et al. (2006)	18	PCa controls (n=17) Non-PCa controls (n=18)	>12 months of ADT use	+26.0–26.5*	+50.9–76.2*	+70.0–84.4a,*
Prospective studies						
Smith et al. (2001)	22	None	3 months	+3.5 (ns)	+63.6*	NR
Smith et al. (2006, 2008a)	25	None	12 weeks	+2.0 (ns)	+25.9*	+12.9b,*
Dockery et al. (2003)	16	None	3 months	+7.1 (ns)	+64.6*	NR
Hamilton et al. (2011)	26	None	12 months	+0.3 (ns)	NR	+11.6a,*
Ziaran et al. (2013)	95	Non-PCa controls (n=88)	24 months	+11.3*	NR	NR
Morote et al. (2015)	539	None	12 months	+4.7*	NR	NR

*Denotes significant difference ($P < 0.05$), ^aassessed via HOMA-IR, ^bassessed via insulin sensitivity index. ADT, androgen deprivation therapy; NR, not reported; ns, not significant; PCa, prostate cancer.

Table 2 Results from studies investigating the effect of ADT on plasma lipids.

Study	n	Comparison groups	Duration	Total cholesterol (%)	LDL-cholesterol (%)	HDL-cholesterol (%)	Triglycerides (%)
Cross-sectional studies							
Basaria et al. (2002)	20	PCa controls (n=18) Non-PCa controls (n=20)	45 months ^a	+7.4–12.9 (ns)	+9.1–18.2 (ns)	–8.3 (ns)	+15–35*
Cleffi et al. (2011)	54	PCa controls (n=25)	15 months ^a	+10.5*	+15.0*	+8.1 (ns)	–12.3 (ns)
Prospective studies							
Smith et al. (2001)	22	None	3 months	+3.2 (ns)	–2.3 (ns)	+8.3 (ns)	+13.3 (ns)
Smith et al. (2002)	32	None	48 weeks	+9.0*	+7.3*	+11.3*	+26.5*
Smith et al. (2006)	26	None	12 weeks	+9.4*	+8.7 (ns)	+9.9*	+23.0*
Smith et al. (2008b)	26	None	12 months	NR	NR	+9.7*	+19.4 (ns)
Dockery et al. (2003)	16	None	3 months	+7.3*	+0.3 (ns)	+20.0*	+14.6 (ns)
Hamilton et al. (2011)	26	None	12 months	+11.2*	+8.9 (ns)	+2.3 (ns)	+46.6*
Oka et al. (2015)	58	None	6 months	+11.2*	+10.3*	+15.2*	+0.6 (ns)
Morote et al. (2015)	539	None	12 months	+5.8*	+3.0*	+7.7*	+12.6*

*Denotes significant difference ($P < 0.05$), ^amean duration of ADT.

ADT, androgen deprivation therapy; HDL, high-density lipoprotein; LDL, low-density lipoprotein; NR, not reported; ns, not significant; PCa, prostate cancer.

Oka et al. 2015). In a large multicenter intervention trial consisting of 539 men undergoing 12 months of ADT, Morote et al. (2015) found that ADT treatment was associated with increases in HDL and LDL cholesterol and triglycerides by 8.5, 2.9 and 6.9%, respectively, within 6 months of treatment; triglycerides increased by a further 6% at 12 months (Morote et al. 2015). Although increases in HDL cholesterol are thought to be cardio-protective in non-ADT populations, there is doubt if this is the case in ADT-treated men as there is some evidence that testosterone may increase reverse cholesterol transport from macrophages *in vivo* (Langer et al. 2002), whereas congenital hypogonadism has been associated with a lower proportion of the anti-atherogenic HDL cholesterol subfraction (Bolu et al. 2013). Given the lack of consistency seen within the literature, it is important that clinicians routinely monitor the blood lipid profile in individual patients to identify those who develop dyslipidemia. Further research identifying potential mediators of the ADT-associated dyslipidemia is also needed to allow for early intervention before clinically significant changes occur.

Changes in blood pressure

Treatment with ADT does not appear to increase blood pressure, with no cross-sectional or longitudinal studies over 3–12 months finding significant changes in either systolic or diastolic blood pressure (Smith et al. 2001,

Cleffi et al. 2011, Hamilton et al. 2011, Morote et al. 2015). A small study of 22 men reported increases in arterial stiffness after three months of ADT (Smith et al. 2001), but there were no significant changes in blood pressure. Given the lack of change seen in other studies, this increase in arterial stiffness may not be of sufficient magnitude to negatively affect blood pressure.

Cardiovascular disease and diabetes

Given the evidence linking ADT to changes in a number of cardiometabolic risk factors, it seems reasonable that ADT could be related to accelerated development of cardiometabolic conditions such as CVD and type 2 diabetes. In non-ADT-treated individuals, increases in insulin resistance, LDL cholesterol and triglycerides have been implicated in the pathogenesis of CVD primarily through their effects on atherosclerotic plaque development (Paneni et al. 2013, Weber & Noels 2011). Additionally, insulin resistance is a major precursor to the development of type 2 diabetes (Kahn et al. 2014). However, it remains unclear whether ADT results in a significant increase in morbidity and mortality from CVD and type 2 diabetes. Evidence from large observational studies show that after adjustment for other covariates such as age, ethnicity and other comorbidities, men treated with ADT are at 16–61% increased risk of type 2 diabetes (Keating et al. 2006, 2010, Alibhai et al. 2009, Tsai et al. 2015a) and 11–31% increased risk of CVD

morbidity (Keating *et al.* 2006, 2010, Saigal *et al.* 2007, Jespersen *et al.* 2014, O'Farrell *et al.* 2015) including non-fatal myocardial infarction (11–31%) (Keating *et al.* 2006, 2010, Jespersen *et al.* 2014), coronary heart disease (16–19%) (Keating *et al.* 2006, 2010) and stroke (19–22%) (Keating *et al.* 2010, Jespersen *et al.* 2014) and 16–35% increased risk of cardiovascular mortality (Keating *et al.* 2006, 2010, Jespersen *et al.* 2014). However, the results from some of these studies are limited by their reliance on the accurate reporting of CVD events and lack of a non-ADT control group. Therefore, it is difficult to determine whether ADT alone, or other confounding factors, are contributing to this increased disease risk. Interestingly a meta-analysis of 4141 patients from eight RCTs comparing men randomized to ADT vs no ADT failed to find an association between ADT and cardiovascular mortality (Nguyen *et al.* 2011). However, cardiovascular morbidity was not assessed in the included studies, and so these results cannot conclude that ADT is not associated with increased risk of non-fatal CVD. Another meta-analysis of 1316 patients from three RCTs examining the effect of ADT on non-fatal cardiovascular events reported a 55% greater risk of a non-fatal cardiovascular event with at least six months of ADT (Carneiro *et al.* 2015). Until further investigations are conducted to clarify the effect of ADT on cardiovascular morbidity and mortality, minimizing the potential for cardiovascular harm should be an important focus for the clinician.

An additional consideration when interpreting research investigating the link between ADT and cardiometabolic disease incidence is that none of the studies mentioned assessed changes in cardiometabolic risk factors or fat mass. Therefore, it is unclear whether the increase in risk is due to a direct effect of ADT on cardiovascular functioning or is mediated by its effects on cardiometabolic risk factors such as fat distribution. This is particularly important when trying to develop targeted screening and treatment strategies within this population. Understanding the effect of ADT on fat distribution may shed light on the link between ADT and increased cardiometabolic risk, and this relationship will be discussed in relation to both ADT and non-ADT populations.

Location matters: body fat distribution and cardiometabolic risk

Adiposity has a major influence on the risk of CVD and type 2 diabetes across genders, ethnicities and age groups

(Cornier *et al.* 2011). At the population level, obesity (typically measured by body mass index (BMI)) has been shown to be positively associated with cardiometabolic risk factors such as hypertension (Brown *et al.* 2000, Cutler *et al.* 2008, Nguyen *et al.* 2008), dyslipidemia and insulin resistance (Brown *et al.* 2000, Nguyen *et al.* 2008), as well as incidence of CVD (Jonsson *et al.* 2002, Nguyen *et al.* 2008), type 2 diabetes (Nguyen *et al.* 2008) and the metabolic syndrome (Nguyen *et al.* 2008). However, adiposity is a heterogeneous condition and can be separated into distinct patterns of fat distribution that cannot be measured by BMI (Cornier *et al.* 2011, Booth *et al.* 2014). Different patterns of fat distribution have unique contributions to cardiometabolic risk, independent of total fat mass (Booth *et al.* 2014). The following discussion will explore the relationship between body fat distribution and cardiometabolic risk in ADT and non-ADT populations, how ADT affects body fat distribution and how these changes can be assessed.

Android and gynoid adiposity

Abdominal adiposity as measured by waist circumference or DXA has been shown to be consistently correlated with cardiometabolic risk factors including higher levels of insulin resistance and fasting glucose (Seidell *et al.* 2001, Snijder *et al.* 2004a,b, Ghandehari *et al.* 2008), dyslipidemia (Seidell *et al.* 2001, Snijder *et al.* 2004a, Ghandehari *et al.* 2008, Lee *et al.* 2008) and higher blood pressure (Ghandehari *et al.* 2008, Lee *et al.* 2008) and is associated with the development of CVD (Ghandehari *et al.* 2008, Arsenault *et al.* 2009, Emerging Risk Factors Collaboration 2011), stroke (Winter *et al.* 2008, Bodenant *et al.* 2011) and type 2 diabetes (Snijder *et al.* 2003, Lee *et al.* 2008), independently of other key covariates including BMI. Compared to android adiposity, having a greater amount of fat distributed in the lower body measured by hip/thigh circumference or DXA has been shown to be inversely associated with markers of dyslipidemia, insulin resistance and glucose control, independent of total or central adiposity (Seidell *et al.* 2001, Snijder *et al.* 2003, 2004a,b). This suggests that the propensity to store fat within this region may be cardioprotective.

There is growing evidence that sex hormones are key mediators of body fat distribution. Studies comparing males and females have shown that when matched for total fat mass, males have a greater amount of abdominal fat mass compared to both premenopausal and postmenopausal women (Kuk *et al.* 2005), suggesting

the presence of testosterone may encourage abdominal weight gain. However, low levels of circulating testosterone in males have been associated with the accumulation of abdominal fat mass (Couillard *et al.* 2000, Svartberg *et al.* 2004). Conversely, observational studies of testosterone supplementation in hypogonadal males have shown significant reductions in abdominal fat mass after treatment (Aversa *et al.* 2010, Kalinchenko *et al.* 2010, Saad *et al.* 2013). In contrast, RCTs investigating the effect of testosterone supplementation on VAT have shown inconsistent results, with some studies showing testosterone supplementation resulted in a reduction (Mårin *et al.* 1992, 1993) or attenuated the age-related increase in VAT (Allan *et al.* 2008), whereas others have shown reductions in SAT with no changes in VAT (Emmelot-Vonk *et al.* 2008, Frederiksen *et al.* 2012, Hoyos *et al.* 2012, Gianatti *et al.* 2014). Reasons for these discrepancies are unclear, but may relate to differences in the dose, route of administration and baseline circulating testosterone concentrations of study participants.

This suggests low testosterone levels could contribute to an increase in abdominal adipose tissue; however, whether this is due to an increase in abdominal SAT and/or VAT is unclear. Indeed, studies investigating the effect of ADT on abdominal adiposity have shown increases in waist circumference of 1.4–1.9% after 6–12 months of treatment (Hamilton *et al.* 2011, Morote *et al.* 2015). However, as these studies did not measure hip circumference, it is unclear if the increases represented a preferential accumulation of abdominal fat mass or were more representative of a global increase in adiposity. In 95 men treated with ADT, Ziaran and coworkers (Ziaran *et al.* 2013) reported a 7.5% and 12% increase in waist-to-hip ratio over the first 12 and 24 months of treatment, respectively, suggesting that there is a preferential accumulation of abdominal fat mass. However, these results need to be interpreted with caution as the waist-to-hip ratio cannot differentiate between absolute changes in fat mass and lean tissue mass. A decline in gluteofemoral muscle mass may also mask gains in gluteofemoral fat mass, thereby not altering hip circumference, resulting in a larger waist-to-hip ratio. This notion is supported in part by the results of Galvão and coworkers (Galvão *et al.* 2008) who assessed DXA-derived changes in regional fat mass and lean tissue mass in 76 men with PCa over the first 36 weeks of ADT treatment. In this study, the increases in fat mass were 21% and 19% in the upper and lower limbs, respectively, compared to 12% in the abdominal region, which suggests that ADT may lead to

greater gains in appendicular fat mass. Furthermore, there were region-specific differences in the changes (losses) in lean tissue mass; abdominal 1.4%, upper limbs 3.7% and lower limbs 5.6%. This highlights that common anthropometric methods such as BMI and waist-hip ratio should be interpreted with caution when measuring changes in adiposity within this population, as they may underestimate changes in fat mass, particularly in the upper and lower limbs.

The role of visceral adipose tissue

Although there is evidence that global patterns of fat distribution are related to cardiometabolic risk, questions remain as to the unique contribution of different depots of adipose tissue. SAT is located underneath the skin and superficial to the abdominal wall, whereas VAT is located underneath the abdominal fascia, in close proximity to key metabolic organs such as the liver and pancreas (Cornier *et al.* 2011, Shuster *et al.* 2014). Evidence from both cross-sectional and longitudinal studies assessing abdominal fat distribution via CT or MRI in large non-ADT cohorts such as the Framingham Study and Multi-Ethnic Study of Atherosclerosis have shown positive associations between VAT and insulin resistance (Preis *et al.* 2010, Shah *et al.* 2014), abnormal glucose control (Liu *et al.* 2010, Smith *et al.* 2012, Shah *et al.* 2014), dyslipidemia (Liu *et al.* 2010, Smith *et al.* 2012, Shah *et al.* 2014, Hwang *et al.* 2015), systemic inflammation (Pou *et al.* 2007, Shah *et al.* 2014) and greater risk of CVD, type 2 diabetes and metabolic syndrome (Rosito *et al.* 2008, Pou *et al.* 2009, Liu *et al.* 2010, Smith *et al.* 2012, Shah *et al.* 2014), independent of age and BMI. In contrast, correlations between abdominal SAT and risk factors have been weaker (Pou *et al.* 2007, 2009, Preis *et al.* 2010) or non-existent (Smith *et al.* 2012, Shah *et al.* 2014, Hwang *et al.* 2015). This suggests that associations between abdominal adiposity and cardiometabolic risk are primarily related to an accumulation of VAT, although cause and effect cannot be established from the previously mentioned studies.

The mechanisms underlying the differing associations between abdominal VAT and SAT with cardiometabolic risk factors have not been fully elucidated; however, several theories have been proposed. In contrast to subcutaneous adipocytes, visceral adipocytes release greater amounts of free fatty acids and pro-inflammatory cytokines (Capurso & Capurso 2012, Booth *et al.* 2014), which have been implicated in the development and progression of many cardiometabolic diseases (Capurso & Capurso 2012).

Blood supply from subcutaneous adipocytes drains into the systemic circulation, whereas blood supply for VAT drains directly into the liver via the portal vein, thereby exposing the liver to significantly higher concentrations of these free fatty acids and pro-inflammatory cytokines that could result in impaired lipid and glucose metabolism within the liver (van der Poorten et al. 2008). Indeed, studies have found a significant correlation between VAT and accumulation of fat within the liver (Liu et al. 2011, Nazare et al. 2012). Given the important role of the liver in glucose and lipid regulation, this may explain part of the relationship between the accumulation of VAT and the development of insulin resistance and dyslipidemia (Hajer et al. 2008, van der Poorten et al. 2008, Capurso & Capurso 2012, Walker et al. 2014). A more recent theory also suggests increased VAT may be representative of an inability of the body to store excess lipids within SAT, resulting in a global accumulation of adipose tissue within ectopic sites such as the muscle, liver, pancreas and myocardium (Després 2012, Tchernof & Després 2013).

A number of the previously mentioned changes in cardiometabolic risk factors seen during ADT mirror those associated with increased visceral adiposity; however, few studies have attempted to directly assess the influence of ADT on abdominal adipose tissue depots or their associations with cardiometabolic risk (Table 3). Two studies (Smith et al. 2002, 2008b) have reported an 11–15% increase in abdominal SAT cross-sectional area measured by single-slice CT, with no significant change in VAT in 26–32 men undergoing 48–52 weeks of ADT. Cheung and coworkers (Cheung et al. 2016b) also failed to find an effect of ADT on VAT (measured via DXA) in 34 men over a 52-week follow-up period; however, changes in SAT were not reported. In contrast, results from a similarly sized cohort of men undergoing 52 weeks of ADT reported increases in CT-derived cross-sectional areas of abdominal SAT (17%) and VAT (22%), with changes occurring after at least 6 months (Hamilton et al. 2011). The reasons for these discrepant findings are unclear. Participants in the latter study (Hamilton et al. 2011)

had a greater level of adiposity at baseline which could have contributed to the differences seen in VAT between studies. Ageing, physical activity and diet are also associated with abdominal fat mass and VAT (Kuk et al. 2005, Molenaar et al. 2009, Nazare et al. 2013, Murabito et al. 2015), but these factors were not controlled for in three of the four studies conducted to date (Smith et al. 2002, 2008b, Hamilton et al. 2011). Cheung and coworkers (Cheung et al. 2016b) conducted the only study to include an age-matched non-ADT control group. However, as these authors used a DXA-derived estimate of VAT (rather than a direct assessment), a regulatory effect of ADT on VAT should not be discounted at this stage. Furthermore, given all four studies had relatively small sample sizes (between 26 and 34 men), larger sample sizes may have been needed to identify if there is a consistent effect of ADT on abdominal adipose tissue.

Interestingly, Hamilton and coworkers (Hamilton et al. 2011) also demonstrated that the increase in VAT during ADT was moderately correlated with increasing insulin resistance (measured via HOMA-IR), which was independent of changes in sex hormones. This suggests that increases in insulin resistance during ADT could be partly due to an indirect effect of changes in VAT during treatment. In contrast, no significant associations were found between abdominal SAT and insulin resistance after controlling for changes in sex hormones. This is an important finding, as it suggests that gains in VAT could be contributing to the increased cardiometabolic risk seen during ADT. However, the more recent study of Cheung and coworkers (Cheung et al. 2016b) (which also included a non-ADT control group) reported an increase in insulin resistance despite no change in VAT. This increase in insulin resistance was moderately correlated with the increase in fat mass; however, abdominal SAT was not reported in this study. Therefore, it is unclear if changes in insulin resistance were related to gains in abdominal SAT or changes in other compartments of adipose tissue.

In summary, the available data indicate that ADT appears to primarily cause the expansion of SAT, with

Table 3 Results from prospective studies investigating the effect of ADT on abdominal adipose tissue.

Study	n	Comparison groups	Duration	Assessment method	VAT (%)	SAT (%)
Smith et al. (2002)	32	None	48 weeks	Single-slice CT (L4–L5)	–0.3 (ns)	+11.1*
Smith et al. (2008b)	26	None	12 months	Single-slice CT (L4–L5)	+1.0 (ns)	+15.5*
Hamilton et al. (2011)	26	None	12 months	Single-slice CT (L4–L5)	+21.8*	+12.7*
Cheung et al. (2016b)	34	PCa controls (n=29)	12 months	DXA	+1.9 (ns)	NR

*Denotes significant difference ($P < 0.05$).

ADT, androgen deprivation therapy; CT, computed tomography; DXA, dual-energy X-ray absorptiometry; NR, not reported; ns, not significant; PCa, prostate cancer; SAT, subcutaneous adipose tissue; VAT, visceral adipose tissue.

minimal impact on VAT. However, these findings should be interpreted with caution given the limitations of the studies conducted to date, including small sample sizes, lack of control groups or use of indirect measures to assess abdominal adipose tissue. Therefore, it appears that whilst being a plausible explanation linking ADT to increased risk of CVD and T2DM, further research using larger sample sizes and including non-ADT comparison groups is needed to establish the effect of ADT on body fat distribution and abdominal adipose tissue. This may help in identifying whether gains in fat mass associated with ADT are contributing to increased cardiometabolic risk or whether other factors such as a direct effect of ADT on metabolic organs such as the liver, pancreas and muscle tissue require further investigation.

Current methods of assessing body fat distribution during ADT

Commonly used measures of assessing body composition and fat distribution include waist and hip circumference, bioelectrical impedance analysis (BIA), DXA, CT and MRI (Cornier *et al.* 2011, Di Sebastiano & Mourtzakis 2012). As indicated in Table 4, all have advantages and disadvantages in their accuracy and practicality that must be taken into account when choosing the best tool to assess body composition and fat distribution.

Circumferences

Circumferences are a simple and rapid tool to estimate abdominal and lower body FM. Waist and hip circumference are used as a marker of abdominal and gluteofemoral fat, respectively (Cornier *et al.* 2011, Shuster *et al.* 2014); however, a key limitation is their inability to discriminate between differences in fat and lean body mass, as well as differences between discrete adipose tissue depots. Given the precise effect of ADT on the ratio between SAT and

VAT is unclear, waist circumference may lack the necessary precision and sensitivity to accurately identify changes occurring in these depots.

Bioelectrical impedance analysis

BIA can be used to estimate FM and fat-free mass by measuring the resistance to a weak electrical current passed throughout the body (Kyle *et al.* 2004, Mialich *et al.* 2014). BIA has the advantages of being quick, easy to administer and portable (Mialich *et al.* 2014). However, its accuracy largely depends on the applicability of the prediction equation to the patient's age, gender, race, ethnicity and health status and hydration status (Dehghan & Merchant 2008, Jaffrin & Morel 2008, Mialich *et al.* 2014) and as it indirectly estimates fat mass from the conduction of electrical current through fat-free tissue, its ability to accurately measure changes in fat distribution appears somewhat limited (Shuster *et al.* 2014).

Computed tomography and magnetic resonance imaging

CT and MRI are considered the gold standard for the assessment of fat distribution (Cornier *et al.* 2011, Di Sebastiano & Mourtzakis 2012, Shuster *et al.* 2014). They provide a detailed cross-sectional slice of body tissues, and multiple slices can be taken to create a three-dimensional image of a given region (Cornier *et al.* 2011, Shuster *et al.* 2014). CT and MRI have the added value of being able to directly measure adipose tissue depots, making them the gold-standard tool for assessing VAT and SAT. However, they have reduced feasibility due to their high costs, need for specialized equipment and in the case of CT, relatively high radiation exposure (Cornier *et al.* 2011, Shuster *et al.* 2014). This often results in only a single slice being assessed and reduced accuracy when estimating volumes of adipose tissue (Shen *et al.* 2004, Demerath *et al.* 2007,

Table 4 Capability of different body composition measurement tools to assess global patterns of body fat distribution and distinct patterns of visceral and subcutaneous adipose tissue.

Method	Capability of measuring global fat distribution	Capability of measuring adipose tissue depots	Clinical applicability
Circumferences	High	Low	Very high
BIA	Low	Low	Very high
DXA	High	High	Moderate
CT	Very high	Very high	Low
MRI	Very high	Very high	Low

Adapted from Di Sebastiano *et al.* (2012) and Shuster *et al.* (2014).

BIA, bioelectrical impedance; circumferences, waist:hip; CT, computed tomography; DXA, dual-energy X-ray absorptiometry; MRI, magnetic resonance imaging.

Irlbeck *et al.* 2010, So *et al.* 2012a,b). Therefore, this may limit their practicality for many clinicians, health professionals and researchers looking to routinely quantify changes in abdominal adipose tissue during ADT, particularly in larger cohorts of patients.

DXA: a new tool for assessing visceral adiposity

DXA is used to estimate the relative amounts of total and regional fat mass, lean tissue mass and BMD (Bazzocchi *et al.* 2016). DXA has the advantage of being quick, relatively inexpensive and possesses a high level of precision, (coefficient of variation <3%) (Kaminsky *et al.* 2014). Studies comparing DXA to CT and MRI have also shown it to be a highly accurate measure of body composition ($r=0.97-0.99$) (Kullberg *et al.* 2009). DXA can also accurately measure regional body composition, allowing the clinician to measure distinct changes in fat mass and lean tissue mass in the abdominal region (including android and gynoid), upper limb and lower limb. Although DXA involves exposure to ionizing radiation, the dose is minimal for a total body scan (<0.01 mSv) (Damilakis *et al.* 2010). Regardless, this should be taken into consideration when taking repeated measurements. An additional limitation is that extremely obese individuals may be too large to fit into the entire scanning field or may exceed the weight restrictions for the machine (~160 kg) (Bazzocchi *et al.* 2016).

Recent advances have led to the development of DXA software (CoreScan for Lunar and InnerCore for Hologic DXA systems) that is capable of estimating VAT and SAT volumes from a standard total body scan. This can be performed by measuring SAT volume within the android region of the body (a predetermined region of interest placed immediately above the iliac crest; Fig. 1i) and subtracting this from the total android fat mass. Scans from DXA systems using this software in non-ADT populations have shown strong correlations with gold standard abdominal SAT/VAT volumes measured by volumetric CT and MRI ($r=0.90-95$) (Kaul *et al.* 2012, Cheung *et al.* 2016a, Neeland *et al.* 2016). The largest of these studies reported DXA-derived VAT mass was able to explain 82% (females) and 87% (males) of the variation in VAT mass measured by multi-slice MRI in a large ($n=2689$) multi-ethnic sample with varying levels of adiposity measured by BMI. Cheung and coworkers (Cheung *et al.* 2016a) also compared VAT volume measured by DXA to VAT cross-sectional area at the L4–L5 vertebral disc

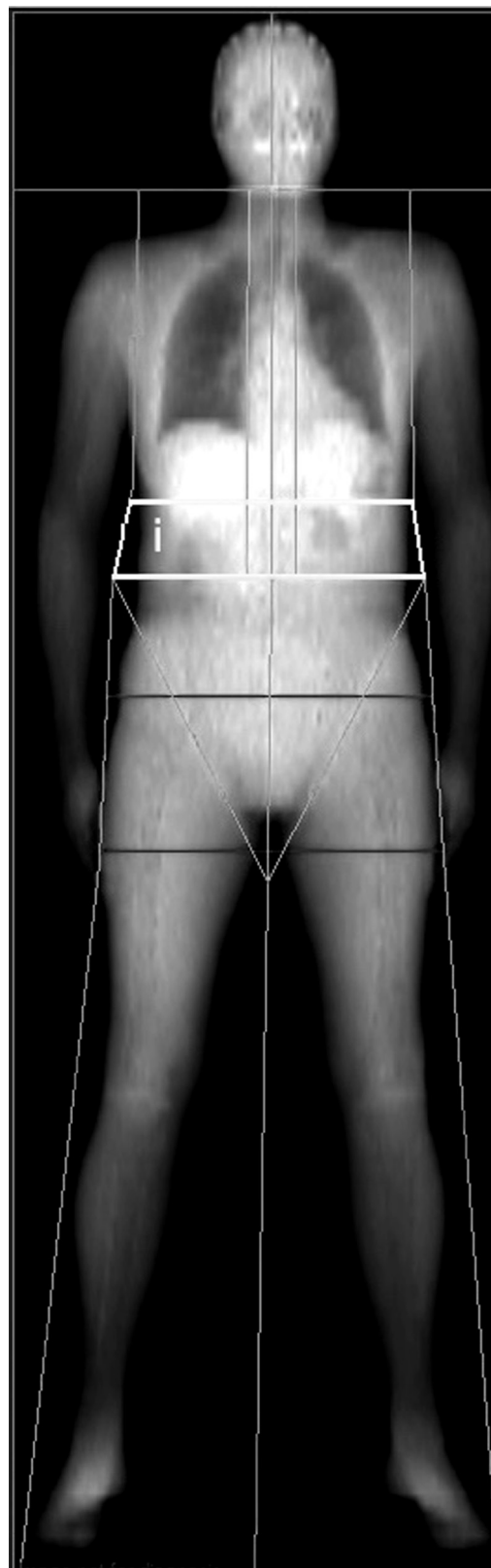


Figure 1 Whole body dual-energy X-ray absorptiometry (DXA) scan. (i) The android region of interest used to calculate android fat mass.

space measured by single-slice CT in 29 men with non-metastatic PCa undergoing 12 months of ADT. These authors reported a strong correlation between the two measures ($r=0.83$); however, this relationship was weaker than previous comparisons against multi-slice CT/MRI measurements (Kaul *et al.* 2012, Ergun *et al.* 2013). The weaker relationship reported in this study could have been influenced by reduced accuracy when using a single-slice CT measurement to assess VAT volumes (Shen *et al.* 2004) and/or the fact that the slice was taken at the L4–L5 vertebrae, which has been shown to have weaker associations with VAT volume than slices taken 5–10 cm above this location (Shen *et al.* 2004). However, as this study did not include gold standard volumetric measures of VAT/SAT, it cannot be excluded that DXA has reduced accuracy when assessing changes in VAT in this patient population. Collectively, these results suggest that VAT estimated from newly developed DXA software may be a sufficiently accurate, cost-effective and practical alternative to CT and MRI for estimating abdominal SAT and VAT in ADT-treated men. However, further research is required to gauge the ability of DXA to assess changes in abdominal adipose tissue during ADT compared to gold standard volumetric CT/MRI before it can be considered an appropriate surrogate measure.

Future directions

For health care professionals to be able to mitigate the adverse cardiometabolic effects that have been attributed to ADT, factors mediating this process need to be identified. Changes in body fat distribution, particularly gains in VAT are a plausible mechanism; however, given the limitations of studies to date, the effect of ADT on VAT remains to be elucidated. Longitudinal studies using tools capable of accurately assessing changes in abdominal adipose tissue (such as CT or MRI) are needed to delineate the effect of ADT on VAT and SAT and how this relates to cardiometabolic risk. Additionally, specific thresholds or reference limits of VAT volumes need to be identified that are clinically significant for stratifying those with differing levels of cardiometabolic or disease risk. This would be needed to support the use of monitoring changes in adipose tissue distribution in routine clinical practice. Notably, CT and MRI have limited clinical feasibility, and so newly developed methods of estimating VAT from a whole-body DXA scan may show promise for both researchers and clinicians to be able to quantify VAT in men undergoing ADT. However, further research

is needed to establish the accuracy of DXA compared to the gold standard volumetric CT/MRI among men undergoing ADT.

Furthermore, in recent years, there has been an increase in the use of alternatives or modifications to continuous ADT, including the use of intermittent ADT as first-line therapy for advanced PCa and the addition of secondary hormone therapies such as abiraterone and enzalutamide for castrate-resistant PCa. There has also been renewed interest in the use of parenteral estradiol as an alternative form of continuous ADT (Phillips *et al.* 2014). This is supported by results from studies such as the PATCH trial, in which it was reported that transdermal estradiol resulted in comparable levels of testosterone suppression and CVD event rates to GnRH agonists, while mitigating the bone loss seen with the GnRH agonist (Langley *et al.* 2008, 2013, 2016). However, the effect of these treatments on body fat distribution and cardiometabolic risk factors has received little attention, and given they are being increasingly used in clinical practice, this should also be an important focus of future research.

Declaration of interest

The authors declare that there is no conflict of interest that could be perceived as prejudicing the impartiality of this review.

Funding

This work did not receive any specific grant from any funding agency in the public, commercial, or not-for-profit sector.

References

- Ahmedi H & Daneshmand S 2013 Androgen deprivation therapy: evidence-based management of side effects. *BJU International* **111** 543–548. (doi:10.1111/j.1464-410X.2012.11774.x)
- Alibhai SM, Duong-Hua M, Sutradhar R, Fleshner NE, Warde P, Cheung AM & Paszat LF 2009 Impact of androgen deprivation therapy on cardiovascular disease and diabetes. *Journal of Clinical Oncology* **27** 3452–3458. (doi:10.1200/JCO.2008.20.0923)
- Allan C, Strauss B, Burger H, Forbes E & McLachlan R 2008 Testosterone therapy prevents gain in visceral adipose tissue and loss of skeletal muscle in nonobese aging men. *Journal of Clinical Endocrinology and Metabolism* **93** 139–146. (doi:10.1210/jc.2007-1291)
- Arsenault BJ, Rana JS, Lemieux I, Despres JP, Kastelein JJP, Boekholdt SM, Wareham NJ & Khaw KT 2009 Physical inactivity, abdominal obesity and risk of coronary heart disease in apparently healthy men and women. *International Journal of Obesity* **34** 340–347. (doi:10.1038/ijo.2009.229)
- Aversa A, Bruzziches R, Francomano D, Rosano G, Isidori AM, Lenzi A & Spera G 2010 Effects of testosterone undecanoate on cardiovascular risk factors and atherosclerosis in middle-aged men with late-onset hypogonadism and metabolic syndrome: results from a 24-month, randomized, double-blind, placebo-controlled study. *Journal of Sexual Medicine* **7** 3495–3503. (doi:10.1111/j.1743-6109.2010.01931.x)

- Basaria S, Lieb J, Tang AM, DeWeese T, Carducci M, Eisenberger M & Dobs AS 2002 Long-term effects of androgen deprivation therapy in prostate cancer patients. *Clinical Endocrinology* **56** 779–786. (doi:10.1046/j.1365-2265.2002.01551.x)
- Basaria S, Muller DC, Carducci MA, Egan J & Dobs AS 2006 Hyperglycemia and insulin resistance in men with prostate carcinoma who receive androgen deprivation therapy. *Cancer* **106** 581–588. (doi:10.1002/cncr.21642)
- Bazzocchi A, Ponti F, Albisinni U, Battista G & Guglielmi G 2016 DXA: Technical aspects and application. *European Journal of Radiology* **85** 1481–1492. (doi:10.1016/j.ejrad.2016.04.004)
- Bodenant M, Kuulasmaa K, Wagner A, Kee F, Palmieri L, Ferrario MM, Montaye M, Amouyel P & Dallongeville J 2011 Measures of abdominal adiposity and the risk of stroke: the monica risk, genetics, archiving and monograph (MORGAM) study. *Stroke* **42** 2872–2877. (doi:10.1161/STROKEAHA.111.614099)
- Bolu E, Sonmez A, Tapan S, Taslipinar A, Aydogdu A, Meric C, Basaran Y, Uckaya G, Serdar M & Kurt I 2013 HDL cholesterol subfractions and the effect of testosterone replacement in hypogonadism. *Hormone and Metabolic Research* **45** 443–448. (doi:10.1055/s-0033-1343447)
- Booth A, Magnuson A & Foster M 2014 Detrimental and protective fat: body fat distribution and its relation to metabolic disease. *Hormone Molecular Biology and Clinical Investigation* **17** 13–27. (doi:10.1515/hmbci-2014-0009)
- Brown CD, Higgins M, Donato KA, Rohde FC, Garrison R, Obarzanek E, Ernst ND & Horan M 2000 Body mass index and the prevalence of hypertension and dyslipidemia. *Obesity Research* **8** 605–619. (doi:10.1038/oby.2000.79)
- Capurso C & Capurso A 2012 From excess adiposity to insulin resistance: the role of free fatty acids. *Vascular Pharmacology* **57** 91–97. (doi:10.1016/j.vph.2012.05.003)
- Carneiro A, Sasse AD, Wagner AA, Peixoto G, Kataguir A, Neto AS, Bianco BAV, Chang P, Pompeo ACL & Tobias-Machado M 2015 Cardiovascular events associated with androgen deprivation therapy in patients with prostate cancer: a systematic review and meta-analysis. *World Journal of Urology* **33** 1281–1289. (doi:10.1007/s00345-014-1439-6)
- Cheung A, de Rooy C, Hoermann R, Gianatti E, Hamilton E, Roff G, Zajac J & Grossmann M 2016a Correlation of visceral adipose tissue measured by Lunar Prodigy dual X-ray absorptiometry with MRI and CT in older men. *International Journal of Obesity* **40** 1325–1328. (doi:10.1038/ijo.2016.50)
- Cheung AS, Hoermann R, Dupuis P, Lim Joon D, Zajac J & Grossmann M 2016b Relationships between insulin resistance and frailty with body composition and testosterone in men undergoing androgen deprivation therapy for prostate cancer. *European Journal of Endocrinology* **175** 229–237. (doi:10.1530/EJE-16-0200)
- Cleffi S, Neto A, Reis L, Maia P, Fonseca F, Wroclawski M, Neves M, Pompeo A, Del Giglio A & Faria E 2011 Androgen deprivation therapy and morbid obesity: do they share cardiovascular risk through metabolic syndrome? *Actas Urologicas Espanolas* **35** 259–265. (doi:10.1016/j.acuroe.2011.06.007)
- Connolly RM, Carducci MA & Antonarakis ES 2012 Use of androgen deprivation therapy in prostate cancer: indications and prevalence. *Asian Journal of Andrology* **14** 177–186. (doi:10.1038/aja.2011.103)
- Cornier M-A, Després J-P, Davis N, Grossniklaus DA, Klein S, Lamarche B, Lopez-Jimenez F, Rao G, St-Onge M-P & Towfighi A 2011 Assessing adiposity a scientific statement from the American Heart Association. *Circulation* **124** 1996–2019. (doi:10.1161/CIR.0b013e318233bc6a)
- Couillard C, Gagnon J, Bergeron J, Leon AS, Rao D, Skinner JS, Wilmore JH, Després J-P & Bouchard C 2000 Contribution of body fatness and adipose tissue distribution to the age variation in plasma steroid hormone concentrations in men: the HERITAGE family study. *Journal of Clinical Endocrinology and Metabolism* **85** 1026–1031. (doi:10.1210/jc.85.3.1026)
- Cutler JA, Sorlie PD, Wolz M, Thom T, Fields LE & Roccella EJ 2008 Trends in hypertension prevalence, awareness, treatment, and control rates in United States adults between 1988–1994 and 1999–2004. *Hypertension* **52** 818–827. (doi:10.1161/HYPERTENSIONAHA.108.113357)
- Damilakis J, Adams JE, Guglielmi G & Link TM 2010 Radiation exposure in X-ray-based imaging techniques used in osteoporosis. *European Radiology* **20** 2707–2714. (doi:10.1007/s00330-010-1845-0)
- Dehghan M & Merchant AT 2008 Is bioelectrical impedance accurate for use in large epidemiological studies? *Nutrition Journal* **7** 1. (doi:10.1186/1475-2891-7-1)
- Demerath EW, Shen W, Lee M, Choh AC & Czerwinski SA 2007 Approximation of total visceral adipose tissue with a single magnetic resonance image. *American Journal of Clinical Nutrition* **85** 362–368.
- DeSantis CE, Lin CC, Mariotto AB, Siegel RL, Stein KD, Kramer JL, Alteri R, Robbins AS & Jemal A 2014 Cancer treatment and survivorship statistics, 2014. *CA: A Cancer Journal for Clinicians* **64** 252–271. (doi:10.3322/caac.21235)
- Després J-P 2012 Body fat distribution and risk of cardiovascular disease: an update. *Circulation* **126** 1301–1313. (doi:10.1161/CIRCULATIONAHA.111.067264)
- Di Sebastiano KM & Mourtzakis M 2012 A critical evaluation of body composition modalities used to assess adipose and skeletal muscle tissue in cancer. *Applied Physiology, Nutrition, and Metabolism* **37** 811–821. (doi:10.1139/h2012-079)
- Dockery F, Bulpitt CJ, Agarwal S, Donaldson M & Rajkumar C 2003 Testosterone suppression in men with prostate cancer leads to an increase in arterial stiffness and hyperinsulinaemia. *Clinical Science* **104** 195–201. (doi:10.1042/cs1040195)
- Emerging Risk Factors Collaboration 2011 Separate and combined associations of body-mass index and abdominal adiposity with cardiovascular disease: collaborative analysis of 58 prospective studies. *Lancet* **377** 1085–1095. (doi:10.1016/S0140-6736(11)60105-0)
- Emmelot-Vonk MH, Verhaar HJ, Pour HRN, Aleman A, Lock TM, Bosch JR, Grobbee DE & van der Schouw YT 2008 Effect of testosterone supplementation on functional mobility, cognition, and other parameters in older men: a randomized controlled trial. *JAMA* **299** 39–52. (doi:10.1016/s0084-4071(08)79088-2)
- Ergun DL, Rothney MP, Oates MK, Xia Y, Wacker WK & Binkley NC 2013 Visceral adipose tissue quantification using lunar prodigy. *Journal of Clinical Densitometry* **16** 75–78. (doi:10.1016/j.jocd.2012.09.002)
- Frederiksen L, Højlund K, Hougaard DM, Mosbeck TH, Larsen R, Flyvbjerg A, Frystyk J, Brixen K & Andersen M 2012 Testosterone therapy decreases subcutaneous fat and adiponectin in aging men. *European Journal of Endocrinology* **166** 469–476. (doi:10.1530/EJE-11-0565)
- Galvão DA, Spry NA, Taaffe DR, Newton RU, Stanley J, Shannon T, Rowling C & Prince R 2008 Changes in muscle, fat and bone mass after 36 weeks of maximal androgen blockade for prostate cancer. *BJU International* **102** 44–47. (doi:10.1111/j.1464-410x.2008.07539.x)
- Ghandehari H, Le V, Kamal-Bahl S, Bassin SL & Wong ND 2008 Abdominal obesity and the spectrum of global cardiometabolic risks in US adults. *International Journal of Obesity* **33** 239–248. (doi:10.1038/ijo.2008.252)
- Gianatti EJ, Dupuis P, Hoermann R, Strauss BJ, Wentworth JM, Zajac JD & Grossmann M 2014 Effect of testosterone treatment on glucose metabolism in men with type 2 diabetes: a randomized controlled trial. *Diabetes Care* **37** 2098–2107. (doi:10.2337/dc13-2845)
- Gilbert SM, Kuo YF & Shahinian VB 2011 Prevalent and incident use of androgen deprivation therapy among men with prostate cancer in the United States. *Urologic Oncology* **29** 647–653. (doi:10.1016/j.urolonc.2009.09.004)

- Gomella LG, Johannes J & Trabulsi EJ 2009 Current prostate cancer treatments: effect on quality of life. *Urology* **73** S28–S35. (doi:10.1016/j.urology.2009.03.003)
- Grossmann M, Hamilton EJ, Gilfillan C, Bolton D, Joon DL & Zajac JD 2011 Bone and metabolic health in patients with non-metastatic prostate cancer who are receiving androgen deprivation therapy. *Medical Journal of Australia* **194** 301–306.
- Hajer GR, van Haefen TW & Visseren FL 2008 Adipose tissue dysfunction in obesity, diabetes, and vascular diseases. *European Heart Journal* **29** 2959–2971. (doi:10.1093/eurheartj/ehn387)
- Hamilton EJ, Gianatti E, Strauss BJ, Wentworth J, Lim-Joon D, Bolton D, Zajac JD & Grossmann M 2011 Increase in visceral and subcutaneous abdominal fat in men with prostate cancer treated with androgen deprivation therapy. *Clinical Endocrinology* **74** 377–383. (doi:10.1111/j.1365-2265.2010.03942.x)
- Heidenreich A, Bastian PJ, Bellmunt J, Bolla M, Joniau S, van der Kwast T, Mason M, Matveev V, Wiegel T, Zattoni F, et al. 2014 EAU guidelines on prostate cancer. Part II: Treatment of advanced, relapsing, and castration-resistant prostate cancer. *European Urology* **65** 467–479. (doi:10.1016/j.eururo.2013.11.002)
- Hoyos CM, Yee BJ, Phillips CL, Machan EA, Grunstein RR & Liu PY 2012 Body compositional and cardiometabolic effects of testosterone therapy in obese men with severe obstructive sleep apnoea: a randomised placebo-controlled trial. *European Journal of Endocrinology* **167** 531–541. (doi:10.1530/EJE-12-0525)
- Hwang Y-C, Fujimoto WY, Hayashi T, Kahn SE, Leonetti DL & Boyko EJ 2015 Increased visceral adipose tissue is an independent predictor for future development of atherogenic dyslipidemia. *Journal of Clinical Endocrinology and Metabolism* **101** 678–685. (doi:10.1210/jc.2015-3246)
- Irlbeck T, Massaro J, Bamberg F, O'Donnell C, Hoffmann U & Fox C 2010 Association between single-slice measurements of visceral and abdominal subcutaneous adipose tissue with volumetric measurements: the Framingham Heart Study. *International Journal of Obesity* **34** 781–787. (doi:10.1038/ijo.2009.279)
- Jaffrin MY & Morel H 2008 Body fluid volumes measurements by impedance: a review of bioimpedance spectroscopy (BIS) and bioimpedance analysis (BIA) methods. *Medical Engineering and Physics* **30** 1257–1269. (doi:10.1016/j.medengphy.2008.06.009)
- Jespersen CG, Nørgaard M & Borre M 2014 Androgen-deprivation therapy in treatment of prostate cancer and risk of myocardial infarction and stroke: a nationwide Danish population-based cohort study. *European Urology* **65** 704–709. (doi:10.1016/j.eururo.2013.02.002)
- Jonsson S, Hedblad B, Engström G, Nilsson P, Berglund G & Janzon L 2002 Influence of obesity on cardiovascular risk. Twenty-three-year follow-up of 22,025 men from an urban Swedish population. *International Journal of Obesity and Related Metabolic Disorders* **26** 1046–1053. (doi:10.1038/sj.ijo.0802060)
- Kaess BM, Pedley A, Massaro JM, Murabito J, Hoffmann U & Fox CS 2012 The ratio of visceral to subcutaneous fat, a metric of body fat distribution, is a unique correlate of cardiometabolic risk. *Diabetologia* **55** 2622–2630. (doi:10.1007/s00125-012-2639-5)
- Kahn SE, Cooper ME & Del Prato S 2014 Pathophysiology and treatment of type 2 diabetes: perspectives on the past, present, and future. *Lancet* **383** 1068–1083. (doi:10.1016/S0140-6736(13)62154-6)
- Kalinchenko SY, Tishova YA, Mskhalaya GJ, Gooren LJ, Giltay EJ & Saad F 2010 Effects of testosterone supplementation on markers of the metabolic syndrome and inflammation in hypogonadal men with the metabolic syndrome: the double-blinded placebo-controlled Moscow study. *Clinical Endocrinology* **73** 602–612. (doi:10.1111/j.1365-2265.2010.03845.x)
- Kaminsky L, Ozemek C, Williams K & Byun W 2014 Precision of total and regional body fat estimates from dual-energy X-ray absorptiometer measurements. *Journal of Nutrition, Health and Aging* **18** 591–594. (doi:10.1007/s12603-014-0012-8)
- Kaul S, Rothney MP, Peters DM6, Wacker WK, Davis CE, Shapiro MD & Ergun DL 2012 Dual-energy X-ray absorptiometry for quantification of visceral fat. *Obesity* **20** 1313–1318. (doi:10.1038/oby.2011.393)
- Keating NL, O'Malley AJ & Smith MR 2006 Diabetes and cardiovascular disease during androgen deprivation therapy for prostate cancer. *Journal of Clinical Oncology* **24** 4448–4456. (doi:10.1200/JCO.2006.06.2497)
- Keating NL, O'Malley AJ, Freedland SJ & Smith MR 2010 Diabetes and cardiovascular disease during androgen deprivation therapy: observational study of veterans with prostate cancer. *Journal of the National Cancer Institute* **102** 39–46. (doi:10.1093/jnci/djp404)
- Ketchandji M, Kuo Y-F, Shahinian VB & Goodwin JS 2009 Cause of death in older men after the diagnosis of prostate cancer. *Journal of the American Geriatrics Society* **57** 24–30. (doi:10.1111/j.1532-5415.2008.02091.x)
- Kuk JL, Lee S, Heymsfield SB & Ross R 2005 Waist circumference and abdominal adipose tissue distribution: influence of age and sex. *American Journal of Clinical Nutrition* **81** 1330–1334.
- Kullberg J, Brandberg J, Angelhed J-E, Frimmel H, Bergelin E, Strid L, Aahlstrom H, Johansson L & Lonn L 2009 Whole-body adipose tissue analysis: comparison of MRI, CT and dual energy X-ray absorptiometry. *British Journal of Radiology* **82** 123–130. (doi:10.1259/bjr/80083156)
- Kyle UG, Bosaeus I, De Lorenzo AD, Deurenberg P, Elia M, Gómez JM, Heitmann BL, Kent-Smith L, Melchior J-C & Pirlich M 2004 Bioelectrical impedance analysis—part I: review of principles and methods. *Clinical Nutrition* **23** 1226–1243. (doi:10.1016/j.clnu.2004.06.004)
- Langer C, Gansz B, Goepfert C, Engel T, Uehara Y, von Dehn G, Jansen H, Assmann G & von Eckardstein A 2002 Testosterone up-regulates scavenger receptor BI and stimulates cholesterol efflux from macrophages. *Biochemical and Biophysical Research Communications* **296** 1051–1057. (doi:10.1016/S0006-291X(02)02038-7)
- Langley RE, Godsland IF, Kynaston H, Clarke NW, Rosen SD, Morgan RC, Pollock P, Kockelbergh R, Lalani el N, Dearnaley D, et al. 2008 Early hormonal data from a multicentre phase II trial using transdermal oestrogen patches as first-line hormonal therapy in patients with locally advanced or metastatic prostate cancer. *BJU International* **102** 442–445. (doi:10.1111/j.1464-410X.2008.07583.x)
- Langley RE, Cafferty FH, Alhasso AA, Rosen SD, Sundaram SK, Freeman SC, Pollock P, Jinks RC, Godsland IF, Kockelbergh R, et al. 2013 Cardiovascular outcomes in patients with locally advanced and metastatic prostate cancer treated with luteinising-hormone-releasing-hormone agonists or transdermal oestrogen: the randomised, phase 2 MRC PATCH trial (PRO9). *Lancet Oncology* **14** 306–316. (doi:10.1016/S1470-2045(13)70025-1)
- Langley RE, Kynaston HG, Alhasso AA, Duong T, Paez EM, Jovic G, Scrase CD, Robertson A, Cafferty F, Welland A, et al. 2016 A randomised comparison evaluating changes in bone mineral density in advanced prostate cancer: luteinising hormone-releasing hormone agonists versus transdermal oestradiol. *European Urology* **69** 1016–1025. (doi:10.1016/j.eururo.2015.11.030)
- Lee CMY, Huxley RR, Wildman RP & Woodward M 2008 Indices of abdominal obesity are better discriminators of cardiovascular risk factors than BMI: a meta-analysis. *Journal of Clinical Epidemiology* **61** 646–653. (doi:10.1016/j.jclinepi.2007.08.012)
- Levine GN, D'Amico AV, Berger P, Clark PE, Eckel RH, Keating NL, Milani RV, Sagalowsky AI, Smith MR & Zakai N 2010 Androgen-deprivation therapy in prostate cancer and cardiovascular risk: a science advisory from the American Heart Association, American Cancer Society, and American Urological Association: endorsed by the American Society for Radiation Oncology. *CA: A Cancer Journal for Clinicians* **60** 194–201. (doi:10.3322/caac.20061)
- Liede A, Hallett DC, Hope K, Graham A, Arellano J & Shahinian VB 2016 International survey of androgen deprivation therapy (ADT)

- for non-metastatic prostate cancer in 19 countries. *ESMO Open* **1** e000040. (doi:10.1136/esmooopen-2016-000040)
- Liu J, Fox CS, Hickson DA, May WD, Hairston KG, Carr JJ & Taylor HA 2010 Impact of abdominal visceral and subcutaneous adipose tissue on cardiometabolic risk factors: the Jackson Heart Study. *Journal of Clinical Endocrinology and Metabolism* **95** 5419–5426. (doi:10.1210/jc.2010-1378)
- Liu J, Fox CS, Hickson D, Bidulescu A, Carr JJ & Taylor HA 2011 Fatty liver, abdominal visceral fat, and cardiometabolic risk factors: the Jackson Heart Study. *Arteriosclerosis, Thrombosis, and Vascular Biology* **31** 2715–2722. (doi:10.1161/ATVBAHA.111.234062)
- Lu-Yao G, Stukel TA & Yao S-L 2004 Changing patterns in competing causes of death in men with prostate cancer: a population based study. *Journal of Urology* **171** 2285–2290. (doi:10.1097/01.ju.0000127740.96006.1a)
- Mårin P, Holmäng S, Jönsson L, Sjöström L, Kvist H, Holm G, Lindstedt G & Björntorp P 1992 The effects of testosterone treatment on body composition and metabolism in middle-aged obese men. *International Journal of Obesity and Related Metabolic Disorders* **16** 991–997.
- Mårin P, Holmäng S, Gustafsson C, Elander A, Eldh J, Sjöström L, Holm G & Björntorp P 1993 Androgen treatment of abnormally obese men. *Obesity Research* **1** 245–251. (doi:10.1002/j.1550-8528.1993.tb00618.x)
- Mialich MS, Sicchieri JM & Jordao Junior AA 2014 Analysis of body composition: a critical review of the use of bioelectrical impedance analysis. *International Journal of Clinical Nutrition* **2** 1–10. (doi:10.12691/ijcn-2-1-1)
- Mohler J, Bahnson RR, Boston B, Busby JE, D'Amico A, Eastham JA, Enke CA, George D, Horwitz EM, Huben RP, et al. 2014 NCCN clinical practice guidelines in oncology: prostate cancer. *Journal of the National Comprehensive Cancer Network* **8** 162–200.
- Molenaar EA, Massaro JM, Jacques PF, Pou KM, Ellison RC, Hoffmann U, Pencina K, Shadwick SD, Vasani RS, O'Donnell CJ, et al. 2009 Association of lifestyle factors with abdominal subcutaneous and visceral adiposity: The Framingham Heart Study. *Diabetes Care* **32** 505–510. (doi:10.2337/dc08-1382)
- Morote J, Gómez-Caamaño A, Alvarez-Ossorio JL, Pesqueira D, Taberner A, Gómez Veiga F, Lorente JA, Porras M, Lobato JJ, Ribal MJ, et al. 2015 The metabolic syndrome and its components in patients with prostate cancer on androgen deprivation therapy. *Journal of Urology* **193** 1963–1969. (doi:10.1016/j.juro.2014.12.086)
- Murabito JM, Pedley A, Massaro JM, Vasani RS, Eslinger D, Blease SJ, Hoffman U & Fox CS 2015 Moderate to vigorous physical activity with accelerometry is associated with visceral adipose tissue in adults. *American Heart Journal* **4** e001379. (doi:10.1161/JAHA.114.001379)
- Nazare J-A, Smith JD, Borel A-L, Haffner SM, Balkau B, Ross R, Massien C, Almérás N & Després J-P 2012 Ethnic influences on the relations between abdominal subcutaneous and visceral adiposity, liver fat, and cardiometabolic risk profile: the international study of prediction of intra-abdominal adiposity and its relationship with cardiometabolic risk/intra-abdominal adiposity. *American Journal of Clinical Nutrition* **96** 714–726. (doi:10.3945/ajcn.112.035758)
- Nazare J-A, Smith J, Borel A-L, Almérás N, Tremblay A, Bergeron J, Poirier P & Després J-P 2013 Changes in both global diet quality and physical activity level synergistically reduce visceral adiposity in men with features of metabolic syndrome. *Journal of Nutrition* **143** 1074–1083. (doi:10.3945/jn.113.175273)
- Neeland I, Grundy S, Li X, Adams-Huet B & Vega G 2016 Comparison of visceral fat mass measurement by dual-X-ray absorptiometry and magnetic resonance imaging in a multiethnic cohort: the Dallas heart study. *Nutrition and Diabetes* **6** e221. (doi:10.1038/nutd.2016.28)
- Nuyen NT, Magno CP, Lane KT, Hinojosa MW & Lane JS 2008 Association of hypertension, diabetes, dyslipidemia, and metabolic syndrome with obesity: findings from the national health and nutrition examination survey, 1999 to 2004. *Journal of the American College of Surgeons* **207** 928–934. (doi:10.1016/j.jamcollsurg.2008.08.022)
- Nguyen PL, Je Y, Schutz FB, Hoffman KE, Hu JC, Parekh A, Beckman JA & Choueiri TK 2011 Association of androgen deprivation therapy with cardiovascular death in patients with prostate cancer: a meta-analysis of randomized trials. *JAMA* **306** 2359–2366. (doi:10.1001/jama.2011.1745)
- Nguyen PL, Alibhai SMH, Basaria S, D'Amico AV, Kantoff PW, Keating NL, Penson DF, Rosario DJ, Tombal B & Smith MR 2015 Adverse effects of androgen deprivation therapy and strategies to mitigate them. *European Urology* **67** 825–836. (doi:10.1016/j.eururo.2014.07.010)
- O'Farrell S, Garmo H, Holmberg L, Adolfsson J, Stattin P & Van Hemelrijck M 2015 Risk and timing of cardiovascular disease after androgen-deprivation therapy in men with prostate cancer. *Journal of Clinical Oncology* **33** 1243–1251. (doi:10.1200/jco.2014.59.1792)
- Oka R, Utsumi T, Endo T, Yano M, Kamiyama S, Kamiya N, Shirai K & Suzuki H 2015 Effect of androgen deprivation therapy on arterial stiffness and serum lipid profile changes in patients with prostate cancer: a prospective study of initial 6-month follow-up. *International Journal of Clinical Oncology* **21** 389–396. (doi:10.1007/s10147-015-0891-7)
- Paneni F, Beckman JA, Creager MA & Cosentino F 2013 Diabetes and vascular disease: pathophysiology, clinical consequences, and medical therapy: part I. *European Heart Journal* **34** 2436–2443. (doi:10.1093/eurheartj/ehd149)
- Phillips I, Shah SI, Duong T, Abel P & Langley RE 2014 Androgen deprivation therapy and the re-emergence of parenteral estrogen in prostate cancer. *Oncology and Hematology Review* **10** 42. (doi:10.17925/OHR.2014.10.1.42)
- Pou KM, Massaro JM, Hoffmann U, Vasani RS, Maurovich-Horvat P, Larson MG, Keaney JF, Meigs JB, Lipinska I, Kathiresan S, et al. 2007 Visceral and subcutaneous adipose tissue volumes are cross-sectionally related to markers of inflammation and oxidative stress: the Framingham heart study. *Circulation* **116** 1234–1241. (doi:10.1161/CIRCULATIONAHA.107.710509)
- Pou KM, Massaro JM, Hoffmann U, Lieb K, Vasani RS, O'Donnell CJ & Fox CS 2009 Patterns of abdominal fat distribution: the Framingham heart study. *Diabetes Care* **32** 481–485. (doi:10.2337/dc08-1359)
- Preis SR, Massaro JM, Robins SJ, Hoffmann U, Vasani RS, Irlbeck T, Meigs JB, Sutherland P, D'Agostino Sr RB & O'donnell CJ 2010 Abdominal subcutaneous and visceral adipose tissue and insulin resistance in the Framingham heart study. *Obesity* **18** 2191–2198. (doi:10.1038/oby.2010.59)
- Riihimäki M, Thomsen H, Brandt A, Sundquist J & Hemminki K 2011 What do prostate cancer patients die of? *Oncologist* **16** 175–181. (doi:10.1634/theoncologist.2010-0338)
- Rosito GA, Massaro JM, Hoffmann U, Ruberg FL, Mahabadi AA, Vasani RS, O'Donnell CJ & Fox CS 2008 Pericardial fat, visceral abdominal fat, cardiovascular disease risk factors, and vascular calcification in a community-based sample: the Framingham heart study. *Circulation* **117** 605–613. (doi:10.1161/CIRCULATIONAHA.107.743062)
- Saad F, Haider A, Doros G & Traish A 2013 Long-term treatment of hypogonadal men with testosterone produces substantial and sustained weight loss. *Obesity* **21** 1975–1981. (doi:10.1002/oby.20407)
- Saigal CS, Gore JL, Krupski TL, Hanley J, Schonlau M & Litwin MS 2007 Androgen deprivation therapy increases cardiovascular morbidity in men with prostate cancer. *Cancer* **110** 1493–1500. (doi:10.1002/cncr.22933)
- Seidell JC, Pérusse L, Després J-P & Bouchard C 2001 Waist and hip circumferences have independent and opposite effects on

- cardiovascular disease risk factors: the Quebec family study. *American Journal of Clinical Nutrition* **74** 315–321.
- Shah RV, Murthy VL, Abbasi SA, Blankstein R, Kwong RY, Goldfine AB, Jerosch-Herold M, Lima JAC, Ding J & Allison MA 2014 Visceral adiposity and the risk of metabolic syndrome across body mass index: the MESA study. *Journal of the American College of Cardiology* **7** 1221–1235. (doi:10.1016/j.jcimg.2014.07.017)
- Shastri BR & Yaturu S 2011 Metabolic complications and increased cardiovascular risks as a result of androgen deprivation therapy in men with prostate cancer. *Prostate Cancer* **2011** 391576. (doi:10.1155/2011/391576)
- Shen W, Punyanitya M, Wang Z, Gallagher D, St-Onge M-P, Albu J, Heymsfield SB & Heshka S 2004 Visceral adipose tissue: relations between single-slice areas and total volume. *American Journal of Clinical Nutrition* **80** 271–278.
- Shuster A, Patlas M, Pinthus J & Mourtzakis M 2014 The clinical importance of visceral adiposity: a critical review of methods for visceral adipose tissue analysis. *British Journal of Radiology* **85** 1–10. (doi:10.1259/bjr/38447238)
- Siegel RL, Miller KD & Jemal A 2015 Cancer statistics, 2015. *CA: A Cancer Journal for Clinicians* **65** 5–29. (doi:10.3322/caac.21254)
- Smith J, Bennett S, Evans L, Kynaston H, Parmar M, Mason M, Cockcroft J, Scanlon M & Davies J 2001 The effects of induced hypogonadism on arterial stiffness, body composition, and metabolic parameters in males with prostate cancer. *Journal of Clinical Endocrinology and Metabolism* **86** 4261–4267. (doi:10.1210/jcem.86.9.7851)
- Smith MR, Finkelstein JS, McGovern FJ, Zietman AL, Fallon MA, Schoenfeld DA & Kantoff PW 2002 Changes in body composition during androgen deprivation therapy for prostate cancer. *Journal of Clinical Endocrinology and Metabolism* **87** 599–603. (doi:10.1210/jcem.87.2.8299)
- Smith MR, Lee H & Nathan DM 2006 Insulin sensitivity during combined androgen blockade for prostate cancer. *Journal of Clinical Endocrinology and Metabolism* **91** 1305–1308. (doi:10.1210/jc.2005-2507)
- Smith MR, Lee H, Fallon MA & Nathan DM 2008a Adipocytokines, obesity, and insulin resistance during combined androgen blockade for prostate cancer. *Urology* **71** 318–322. (doi:10.1016/j.urology.2007.08.035)
- Smith MR, Lee H, McGovern F, Fallon MA, Goode M, Zietman AL & Finkelstein JS 2008b Metabolic changes during gonadotropin-releasing hormone agonist therapy for prostate cancer. *Cancer* **112** 2188–2194. (doi:10.1002/cncr.23440)
- Smith JD, Borel A-L, Nazare J-A, Haffner SM, Balkau B, Ross R, Massien C, Alméras N & Després J-P 2012 Visceral adipose tissue indicates the severity of cardiometabolic risk in patients with and without type 2 diabetes: results from the INSPIRE ME IAA study. *Journal of Clinical Endocrinology and Metabolism* **97** 1517–1525. (doi:10.1210/jc.2011-2550)
- Snijder MB, Dekker JM, Visser M, Bouter LM, Stehouwer CD, Kostense PJ, Yudkin JS, Heine RJ, Nijpels G & Seidell JC 2003 Associations of hip and thigh circumferences independent of waist circumference with the incidence of type 2 diabetes: the Hoorn Study. *American Journal of Clinical Nutrition* **77** 1192–1197.
- Snijder MB, Dekker JM, Visser M, Bouter LM, Stehouwer CDA, Yudkin JS, Heine RJ, Nijpels G & Seidell JC 2004a Trunk fat and leg fat have independent and opposite associations with fasting and postload glucose levels: the Hoorn study. *Diabetes Care* **27** 372–377. (doi:10.2337/diacare.27.2.372)
- Snijder MB, Zimmet PZ, Visser M, Dekker JM, Seidell JC & Shaw JE 2004b Independent and opposite associations of waist and hip circumferences with diabetes, hypertension and dyslipidemia: the AusDiab Study. *International Journal of Obesity and Related Metabolic Disorders* **28** 402–409. (doi:10.1038/sj.ijo.0802567)
- So R, Matsuo T, Sasai H, Eto M, Tsujimoto T, Saotome K & Tanaka K 2012a Best single-slice measurement site for estimating visceral adipose tissue volume after weight loss in obese, Japanese men. *Nutrition and Metabolism* **9** 1–9. (doi:10.1186/1743-7075-9-56)
- So R, Sasai H, Matsuo T, Tsujimoto T, Eto M, Saotome K & Tanaka K 2012b Multiple-slice magnetic resonance imaging can detect visceral adipose tissue reduction more accurately than single-slice imaging. *European Journal of Clinical Nutrition* **66** 1351–1355. (doi:10.1038/ejcn.2012.147)
- Svartberg J, von Mühlen D, Sundsfjord J & Jorde R 2004 Waist circumference and testosterone levels in community dwelling men. The Tromsø study. *European Journal of Epidemiology* **19** 657–663. (doi:10.1023/B:EJEP.0000036809.30558.8f)
- Tchernof A & Després JP 2013 Pathophysiology of human visceral obesity: an update. *Physiological Reviews* **93** 359–404. (doi:10.1152/physrev.00033.2011)
- Torre LA, Bray F, Siegel RL, Ferlay J, Lortet-Tieulent J & Jemal A 2015 Global cancer statistics, 2012. *CA: A Cancer Journal for Clinicians* **65** 87–108. (doi:10.3322/caac.21262)
- Tsai H-T, Keating NL, Van Den Eeden SK, Haque R, Cassidy-Bushrow AE, Yood MU, Smith MR & Potosky AL 2015a Risk of diabetes among patients receiving primary androgen deprivation therapy for clinically localized prostate cancer. *Journal of Urology* **193** 1956–1962. (doi:10.1016/j.juro.2014.12.027)
- Tsai H-T, Penson D, Luta G, Lynch JH, Zhou Y & Potosky AL 2015b Adoption of intermittent androgen deprivation therapy for advanced prostate cancer: a population based study in American urology practice. *Urology Practice* **2** 190–198. (doi:10.1016/j.urpr.2014.11.001)
- van der Poorten D, Milner KL, Hui J, Hodge A, Trenell MI, Kench JG, London R, Peduto T, Chisholm DJ & George J 2008 Visceral fat: a key mediator of steatohepatitis in metabolic liver disease. *Hepatology* **48** 449–457. (doi:10.1002/hep.22350)
- Walker GE, Marzullo P, Ricotti R, Bona G & Prodam F 2014 The pathophysiology of abdominal adipose tissue depots in health and disease. *Hormone Molecular Biology and Clinical Investigation* **19** 57–74. (doi:10.1515/hmbci-2014-0023)
- Weber C & Noels H 2011 Atherosclerosis: current pathogenesis and therapeutic options. *Nature Medicine* **17** 1410–1422. (doi:10.1038/nm.2538)
- Winter Y, Rohrmann S, Linseisen J, Lanczik O, Ringleb PA, Hebebrand J & Back T 2008 Contribution of obesity and abdominal fat mass to risk of stroke and transient ischemic attacks. *Stroke* **39** 3145–3151. (doi:10.1161/STROKEAHA.108.523001)
- Ziaraan S, Goncalves FM & Sn JB 2013 Complex metabolic and skeletal changes in men taking long-term androgen deprivation therapy. *Clinical Genitourinary Cancer* **11** 33–38. (doi:10.1016/j.clgc.2012.08.005)

Received in final form 28 December 2016

Accepted 6 January 2017

Accepted Preprint published online 6 January 2017